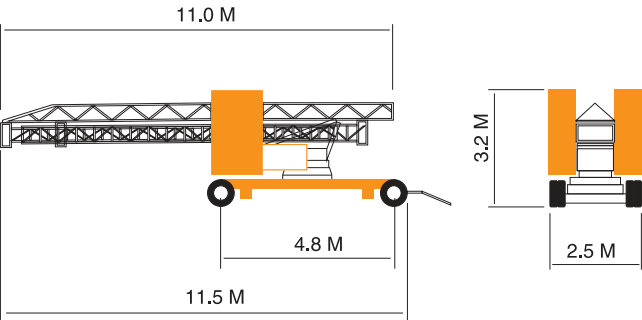


MTC 3625

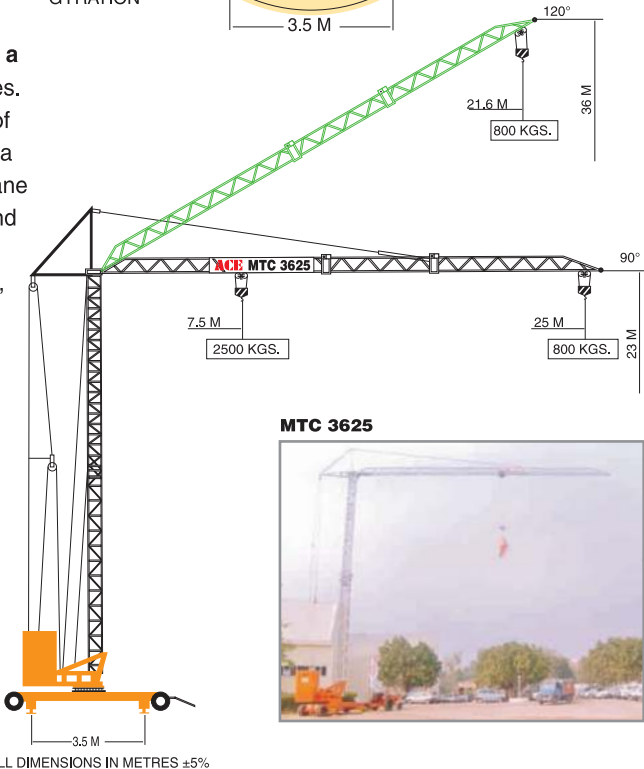
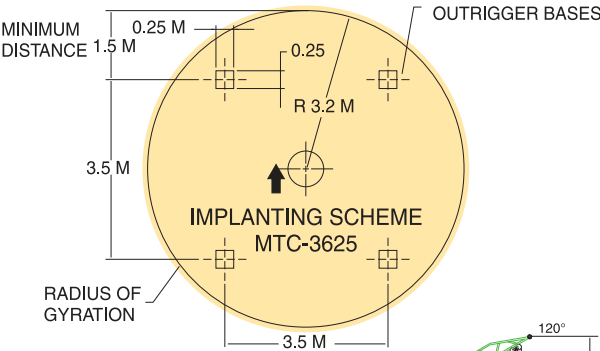
Mobile Tower Crane

2.5 t

- MTC-3625 is a **self erecting/self folding** mobile tower crane. Operations can be easily affected by a single operator, through a remote control pod.
- The crane is mounted on a **towable type trailer** with compact dimensions for easy transportation.
- MTC-3625 is **controlled by a remote**. This facilitates the operator to position himself in such a way that he can see both picking as well as dumping points for precise load positioning.
- To minimise dead weight for long distance transportation, the counter weight box is designed with trap doors to enable **general ballast use as counter weight**.
- The chassis design enables a short turning radius and **easy positioning**.
- Stabilizers are out and down type and can be reiterated into the lower chassis to satisfy **road clearance codes**.
- An optional **prime mover with a built-in 25KVA generator**, makes MTC-3625 totally independent of any outside electric source and a separate carrier vehicle. The crane uses only a part of the power and the generator can be used for other site equipment like mixers, vibrators and job site lighting systems.



MTC 3625 in folded position



Horizontal jib position	Height Reach Capacity	23 mtrs. 7.5 mtrs. 25 mtrs. 2500 Kgs. 800 Kgs.
Raised jib position	Height Reach Capacity	36 mtrs. 7.2 mtrs. 21.6 mtrs. 2500 Kgs. 800 Kgs.
Speed	Trolleying Hoisting Slewing	30m/min. 20m/min. & 40m/min. 1 RPM
Electrical motors	Trolleying Hoisting Slewing	1.5 H.P. 10.0 H.P. 2.0 H.P.
Electric Power		12.5 KVA
Total weight with Ballast		17000 Kgs.
Total weight without Ballast		8000 Kgs.
Transportation Dimensions	Width Length Height	2,5 mtrs. 11,5 mtrs. 3,2 mtrs.
Safety device		<ul style="list-style-type: none"> • Vfd • Circuit breakers • Overload limit switch • Moment limit switch • Hoist limit switch • Trolley limit switch
Optional		Prime mover fitted with 49 BHP, water cooled diesel engine and a 25 KVA alternator.

ALL DIMENSIONS IN METRES ±5%